

Yamaha Steinberg USB Driver Installation Guide

Contents

| | |
|---|----------|
| NOTICE | 1 |
| What is Yamaha Steinberg USB Driver? | 1 |
| Installing Yamaha Steinberg USB Driver | 2 |
| Control Panel of the Driver..... | 4 |
| Uninstalling the Software | 6 |
| Troubleshooting | 7 |

NOTICE

- This software and Installation Guide are the exclusive copyrights of Yamaha Corporation.
- Copying of the software or reproduction of this Installation Guide in whole or in part by any means is expressly forbidden without the written consent of the manufacturer.
- Steinberg/Yamaha makes no representations or warranties with regard to the use of the software and documentation and cannot be held responsible for the results of the use of this Installation Guide and the software.
- The screen displays as illustrated in this manual are for instructional purposes, and may appear somewhat different from the screens which appear on your computer.
- Steinberg and Cubase are the registered trademarks of Steinberg Media Technologies GmbH.
- Windows is the registered trademark of Microsoft® Corporation.
- Apple, Mac and Macintosh are trademarks of Apple Inc., registered in the U.S. and other countries.
- The company names and product names in this manual are the trademarks or registered trademarks of their respective companies.
- Copying of the commercially available musical data including but not limited to MIDI data and/or audio data is strictly prohibited except for your personal use.

What is Yamaha Steinberg USB Driver?

The Yamaha Steinberg USB Driver enables communication between a USB device (which is compatible with the Yamaha Steinberg USB Driver) and your computer.

Installing Yamaha Steinberg USB Driver

NOTE

- You are only permitted to use this software pursuant to the terms and conditions of the “License Agreement” shown during the installation.
- If the same software components have already been installed in your computer, you can use the same procedure as described in the installation instructions here to update the software.

Windows

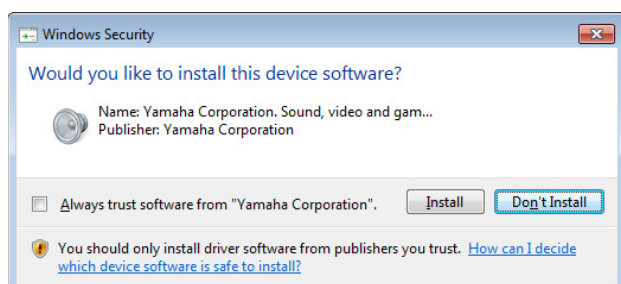
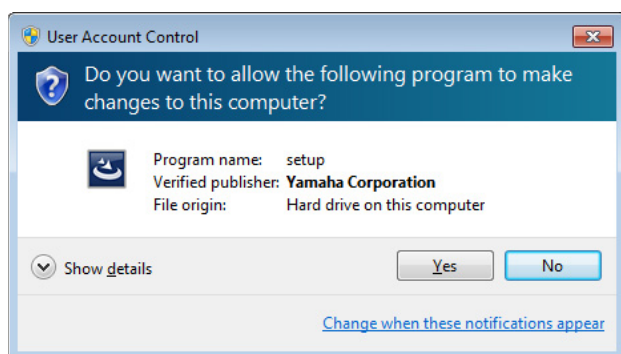
Preparation

If the following warning messages appear during the installation, click [Continue Anyway], [Yes], or [Install].

Example of warning message on Windows XP



Examples of warning message on Windows Vista/Windows 7



Installation

- 1 Turn off the computer.**
- 2 Disconnect all USB devices other than the mouse and keyboard from the computer.**
- 3 Start the computer and log on to the Administrator account.**
- 4 Double-click “setup.exe” in the compressed file you have downloaded.**
- 5 Follow the on-screen instructions to install the software.**
- 6 When installation has been completed, click [Finish].**
If a window requiring you to restart your computer appears, follow the on-screen instructions and restart the computer.

Device Connection

- 7 Connect the device directly to the computer by using a USB cable.**
Make sure to not connect it to a USB hub.
- 8 Turn on the device (if it has a power switch).**
Windows XP
The “Found New Hardware Wizard” window appears. Go on to step 9.
Windows Vista/Windows 7
Go on to step 12.
- 9 If the “Can Windows connect to Windows Update to search for software?” message appears in the middle of the window, select “No, not this time” then click [Next].**
- 10 Confirm that “Install the software automatically” has been selected, then click [Next].**
- 11 When installation has been completed, click [Finish].**

Confirmation of Installation

12 Open the “Device Manager” window as follows.

Windows XP

Click [Start] → [Control Panel] → ([Performance and Maintenance]) → [System] → [Hardware] tab → [Device Manager]

Windows Vista/Windows 7

Click [Start] → [Control Panel] → ([Hardware and Sound]) → [Device Manager]

13 Click on the [+] mark or [>] mark next to “Sound, video and game controllers.”

14 Confirm that the device name you are using is listed.

Installation of the Yamaha Steinberg USB Driver is now completed.

Mac

Installation

- 1** Turn off the computer.
- 2** Disconnect all USB devices other than the mouse and keyboard from the computer.
- 3** Start the computer and log in to the Administrator account.
- 4** Double-click “Yamaha Steinberg USB Driver.mpkg.” in the compressed file you have downloaded.
- 5** Follow the on-screen instructions to install the software.
- 6** When installation has been completed, click [Restart] to restart the computer.

Device Connection

- 7** Connect the device directly to the computer by using a USB cable.
Make sure to not connect it to a USB hub.
- 8** Turn on the device (if it has a power switch).

Confirmation of Installation

9 Open the “Audio MIDI Setup” window as follows.

Click [Macintosh HD] → [Applications] → [Utilities] → [Audio MIDI Setup]

10 Confirm that the device name you are using is listed in the following.

Mac OS X 10.5

In the “Properties For:”

Mac OS X 10.6/10.7

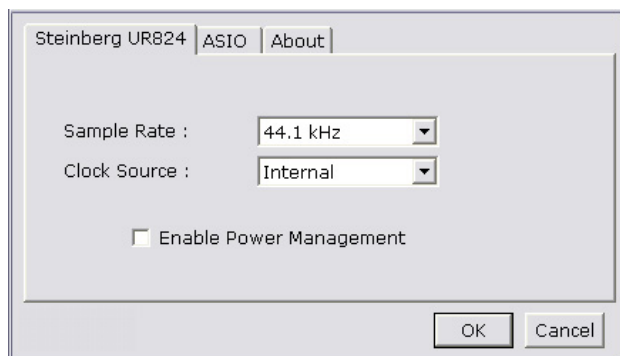
In the left column

Installation of the Yamaha Steinberg USB Driver is now completed.

Control Panel of the Driver

This is the control panel for selecting the general settings of the audio driver. Click the upper tabs to select the desired window.

Screenshot



How to Open the Window

Windows

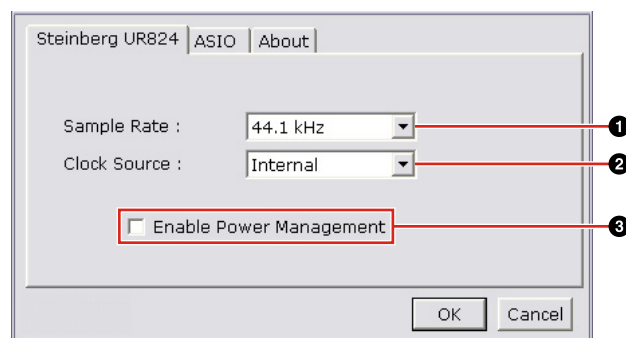
- [Start] → [Control Panel] → [Hardware and Sound] or [Sounds, Speech, and Audio Devices] → [Yamaha Steinberg USB Driver]
- From the Cubase series menu, [Devices] → [Device Setup] → [Yamaha Steinberg USB ASIO] → [Control Panel]

Mac

- [System Preferences] → [Yamaha Steinberg USB]
- From the Cubase series menu, [Devices] → [Device Setup] → [(Device name)] → [Control Panel] → [Open Config App]

Panel Controls

(Device name) Window



❶ Sample Rate (Windows only)

Selects the sample rate of the device.

NOTE

- For Mac, select the sample rate of the device via the Audio MIDI Setup.

❷ Clock Source (Windows only) (Enabled device only)

Selects the word clock source of the device.

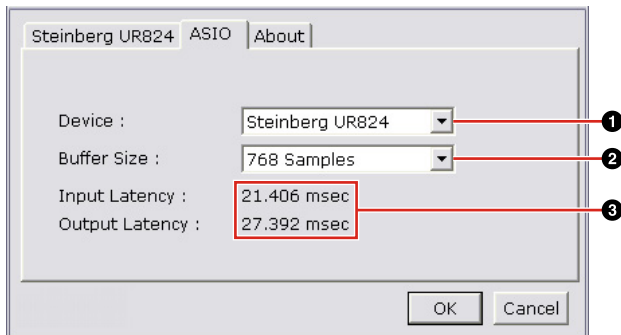
NOTE

- For Mac, select the word clock source of the device via the Audio MIDI Setup.

❸ Enable Power Management (Enabled device only)

Select enable (checkmark) and disable (no checkmark) for automatic power off.

ASIO Window (Windows only)



1 Device

Selects the device that will be using the ASIO driver. This function is available when connecting to the computer two or more devices compatible with the Yamaha Steinberg USB Driver.

2 Buffer Size

Selects the buffer size for the ASIO driver.

NOTE

- For Mac, select the buffer size in the buffer size selecting window, which is opened from an application such as DAW software.

3 Input Latency/Output Latency

Indicates the delay time for the audio input and output in millisecond units. Audio latency varies depending on the value of the ASIO buffer size. The lower the value of the ASIO buffer size, the lower the value of Audio latency.

About Window



1 About

Indicates the version and copyright of the audio driver. The letters "x.x.x" indicate the version number.

TIP

Setting the audio driver buffer size

Noise produced when using audio applications such as DAW software may affect audio recording and/or playback. In most cases, you can solve these problems by adjusting the audio driver buffer size (the size of memory used to temporarily hold data to avoid intermittent playback). While the higher buffer size reduces load to the computer CPU but produces latency (time lag) during recording/playback, the smaller buffer size may result in noise or the sound cutting off. Make sure to set the buffer size to an appropriate value depending on the performance of your computer, the number of audio/MIDI tracks being recorded/played back on the DAW software, the number of plug-in software, and so on.

Uninstalling the Software

Windows

- 1 Disconnect all other USB devices except mouse and keyboard from the computer.**
- 2 Log on to the Administrator account.**
Exit any open applications and close all open windows.
- 3 Open the window for the uninstall operation as follows.**
Windows XP
From the Start menu, select ([Settings] →) [Control Panel] → [Add or Remove Programs] to display the Add or Remove Programs panel. Click “Change or Remove Programs” located in the upper left.
Windows Vista/Windows 7
From the Start menu, select [Control Panel] → [Uninstall a Program] to call up the “Uninstall or change a program” panel.
- 4 Select “Yamaha Steinberg USB Driver” from the list.**
- 5 Uninstall them as follows.**
Windows XP
Click [Change / Remove] / [Remove].
Follow the on-screen instructions to remove the software.
Windows Vista/Windows 7
Click the [Uninstall] / [Uninstall / Change].
If the “User Account Control” window appears, click [Continue] or [Yes].
Follow the on-screen instructions to remove the software.

Mac

Remove the following folders and files from the boot disk (usually Macintosh HD).

NOTE

- If the folders below are not displayed in the Finder, select [Go to Folder...] under the [Go] menu of Finder, input the folder locations, and then click [Go].

/System/Library/Extensions

YamahaSteinbergUSBAudio.kext

/Applications/Yamaha/USBDriver/

Yamaha Steinberg USB Control Panel.app

/Library/PreferencePanes/

Yamaha Steinberg USB.prefPane

/Library/Preferences/

com.yamaha.YamahaSteinbergUSBDriver.plist

/Library/Audio/MIDI Drivers/

YamahaSteinbergUSBMIDI.plugin

/Library/Audio/MIDI Devices/Yamaha/Images/

USB_1500.tiff

USB_1502.tiff

USB_1503.tiff

USB_1506.tiff

USB_1507.tiff

/Library/Receipts/

YamahaSteinbergUSBAudioDriver.pkg

YamahaSteinbergUSBControlPanel.pkg

YamahaSteinbergUSBDriverplist.pkg

YamahaSteinbergUSBMIDIPlugIn.pkg

YamahaSteinbergUSBMIDIIcon.pkg

YamahaSteinbergUSBPrefPane.pkg

Troubleshooting

No sound.

- **Are your speaker cables connected properly?**
- **Are your speaker cables shorted?**
- **Are the volume controls of your sources, audio devices, applications software, computer operating system, etc., set at appropriate levels?**
- **(Windows only) Is the output of your computer operating system muted?**
- **Do you have several applications running at the same time?**
Be sure to quit all applications you are not using.

Noise occurs, or the sound is intermittent or distorted.

- **Does your computer satisfy the system requirements?**
Refer to "System Requirements for software" in the included Release Notes.
- **Is the buffer size setting of the Yamaha Steinberg USB Driver set properly?**
Refer to the "Control Panel of the Driver" on page 4.
- **Are any other applications, device drivers, or USB devices (scanners, printers, etc.) running at the same time?**
Be sure to quit all applications you are not using.
- **Are you playing back a large number of audio tracks?**
The number of tracks you can play at the same time will depend on the performance of the computer you are using. You may experience intermittent playback if you exceed your computer's capabilities.
- **Are you recording or playing long continuous sections of audio?**
The audio data processing capabilities of your computer will depend on a number of factors including CPU speed and access to external devices.
- **Is the network adaptor running?**
Disable the suspected network adaptor. Some network adaptors can cause noise.